

# Fu Gwa Gado Kondre

*refrein:*

Fu gwa Ga-do kon- dre, yu

*F C7 F C7 F*

4

mu - su fu dray yu li - bi, fu gwa Ga - do kon - dre yu

*F Bb C*

6

mu - su fu dray yu li - bi, fu gwa Ga - do kon - dre yu

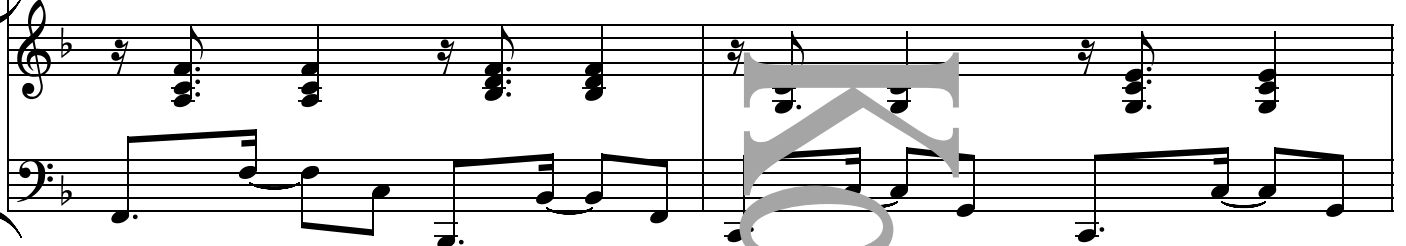
*F F*

8



mu - su fu dray yu li - bi, fu gwa Ga - do kon - dre Je - zus

F Bb C

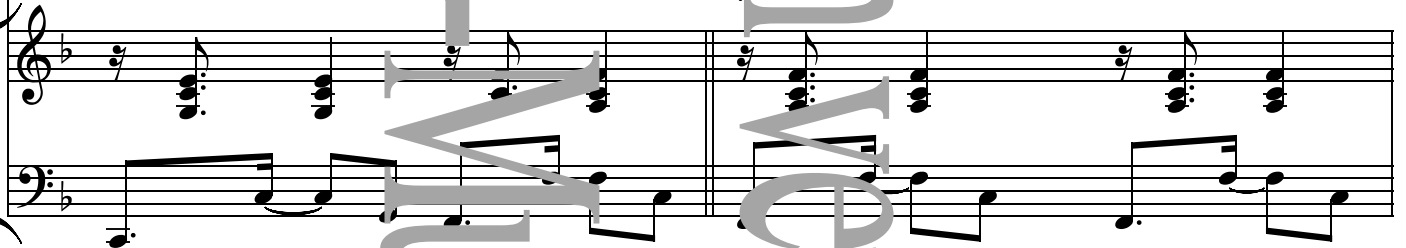


10



wa - wan kan ye - r - yu. Sa - bi sin - gi no - mo, Sa - bu - ko no - mo, gu - du no - mo, ja, Do - gi pu no - mo, Gron ta - pu sa - ni,

*roki:*

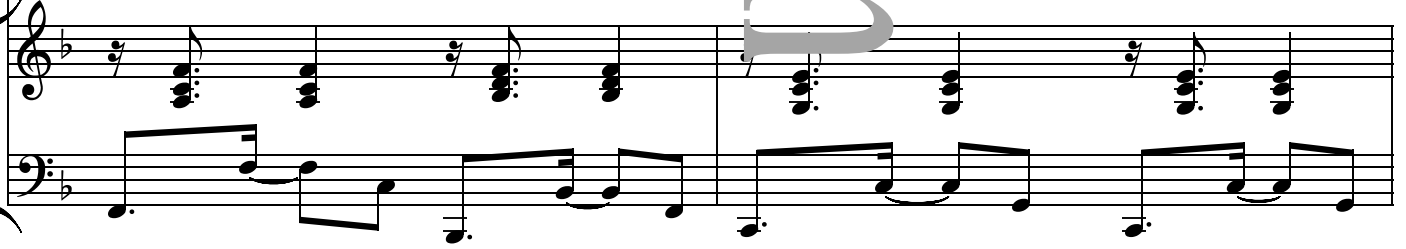


12



No man fu tyay gwa Ga - do Pree po - ku no - mo, Sa - bi le - si no - mo, A - bi mo - ni nor - no, ja Nyan con mu - nie no - mo, Sa - bi su - tu no - mo, Gron ta - pu gu - du,

F Bb



*piki:*

*traki:*